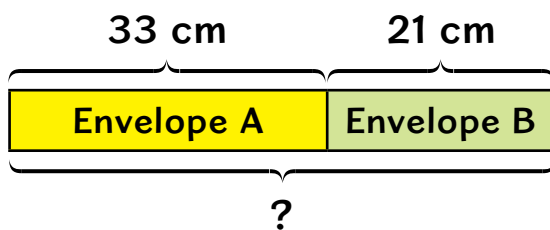


Word Problems

Let's Learn



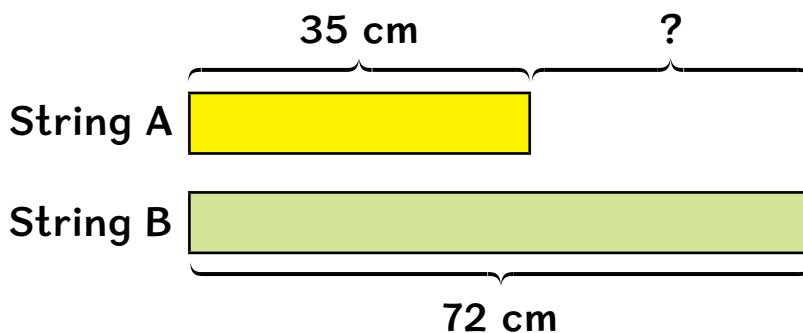
- 1 The length of Envelope A is 33 cm.
The length of Envelope B is 21 cm.
What is the total length of the two envelopes?



$$33 + 21 = 54$$

The total length of the two envelopes is **54 cm**.

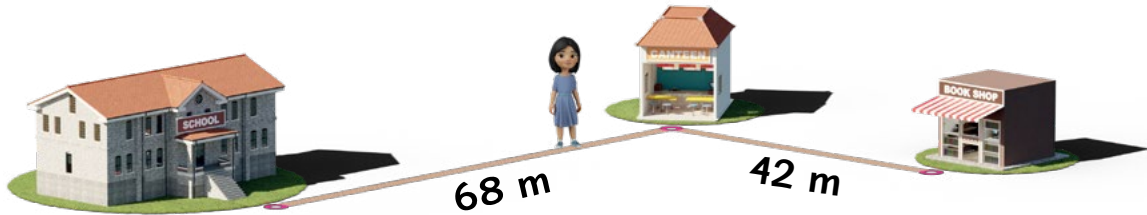
- 2 String A is 35 cm long.
String B is 72 cm long.
How much shorter is String A than String B?



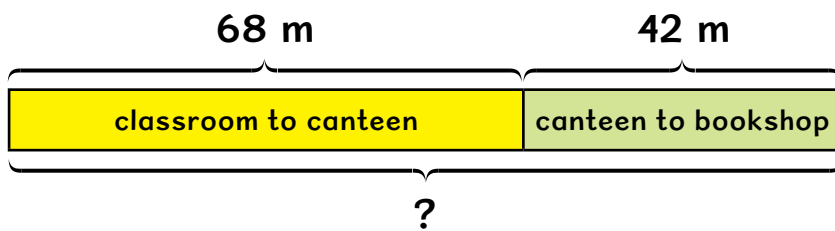
$$72 - 35 = 37$$

String A is **37 cm** shorter than String B.

- 3 Siti walked 68 m from her classroom to the canteen. She walked 42 m from the canteen to the bookshop.



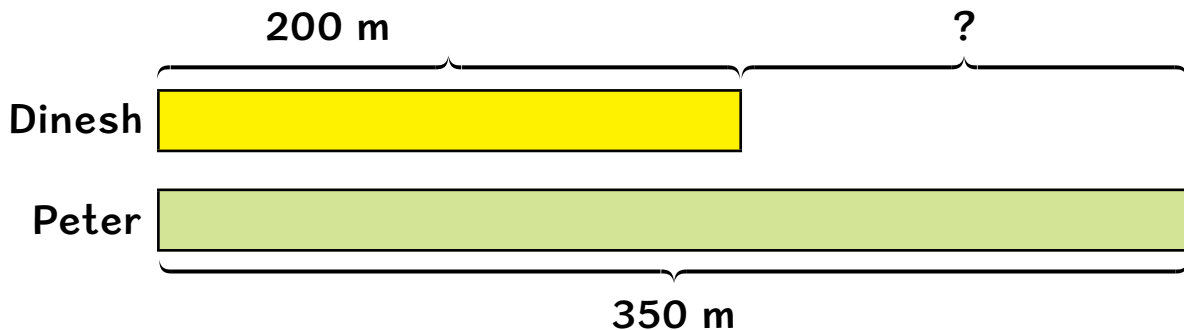
How far did she walk altogether?



$$68 + 42 = 110$$

She walked **110 m** altogether.

- 4 Dinesh jogged 200 m. Peter jogged 350 m. How many more metres did Peter jog than Dinesh?



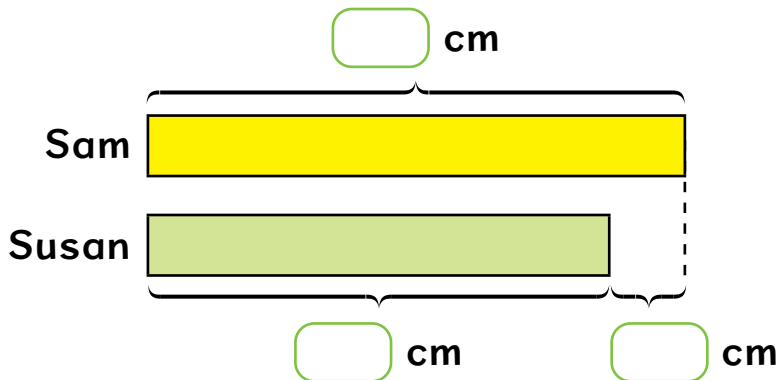
$$350 - 200 = 150$$

Peter jogged **150 m** more than Dinesh.

Let's Practise



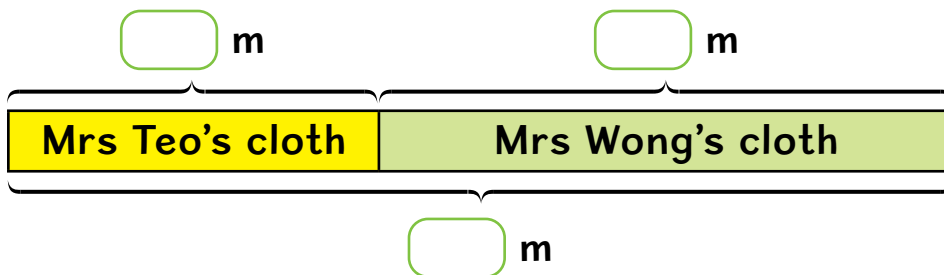
- 1 Sam is 145 cm tall.
Susan is 7 cm shorter than Sam.
How tall is Susan?



$$\boxed{} \ominus \boxed{} = \boxed{}$$

Susan is cm tall.

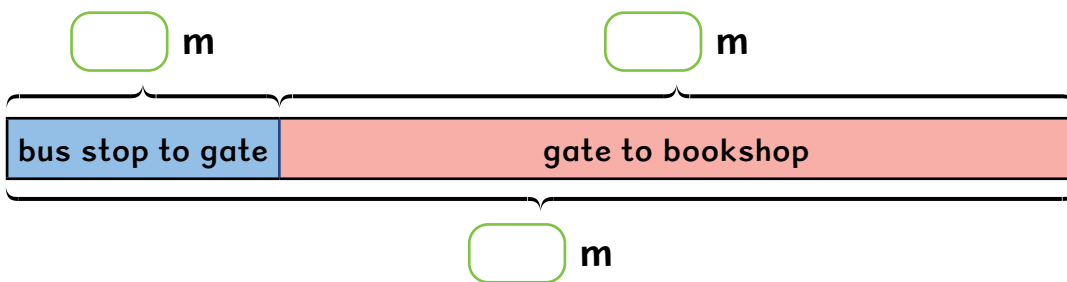
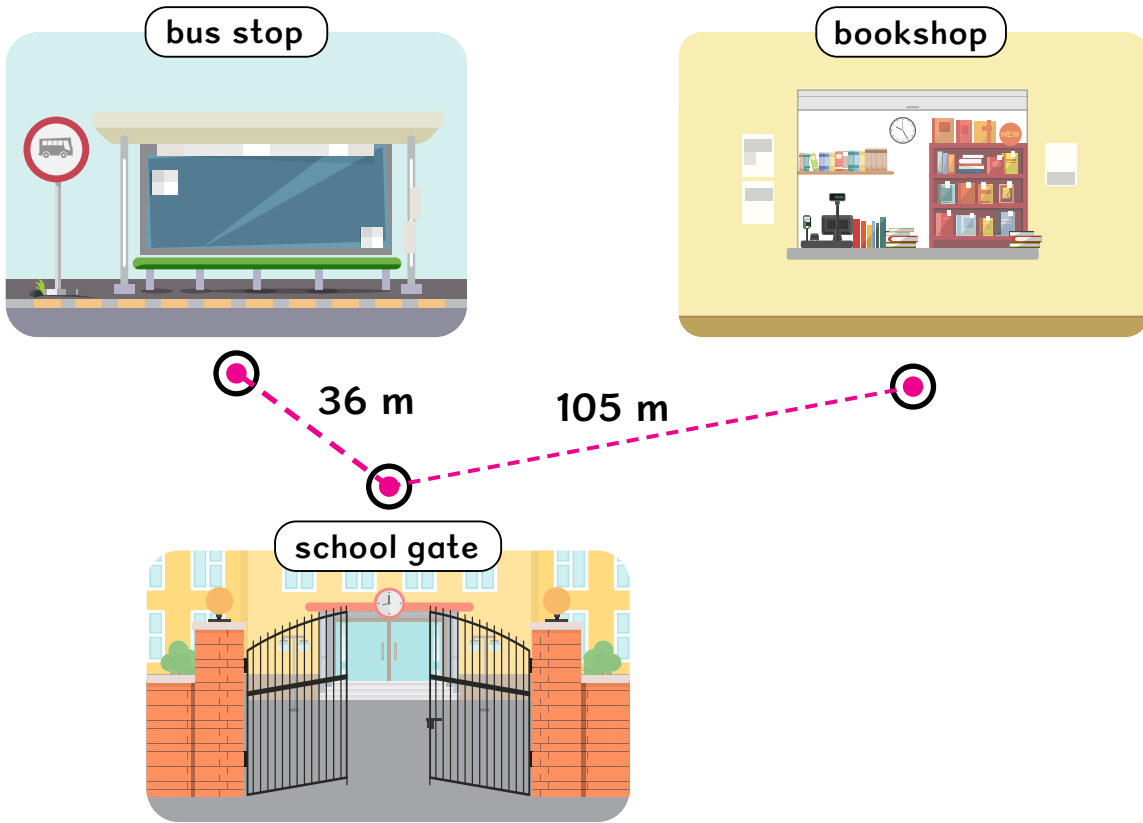
- 2 Mrs Teo used 128 m of cloth to make curtains.
Mrs Wong used 264 m of cloth to make banners.
How much cloth did they use altogether?



$$\boxed{} \oplus \boxed{} = \boxed{}$$

They used m of cloth altogether.

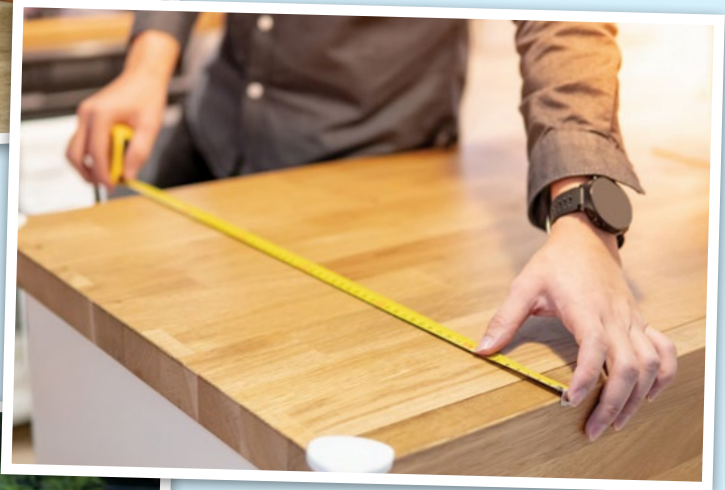
- 3 Ravi walked 36 m from the bus stop to the school gate. He then walked 105 m from the school gate to the bookshop. How far did he walk altogether?



$$\square \text{ } \square \text{ } = \square$$

He walked m altogether.

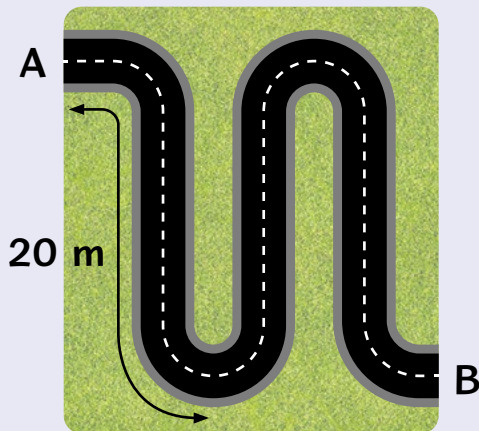
What is being measured in each picture?





Thinking Aloud

- 1 Jim has 2 pieces of string.
String A is 79 cm long and String B is 2 m long.
Which piece of string is longer?
- 2 A road connects A to B.



The distance of the road from A to B is about m.

- 3 Jayden and Daniel measure the length of a sofa.

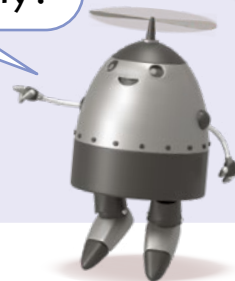
I use a 20-cm ruler to measure.



I use a metre ruler to measure.



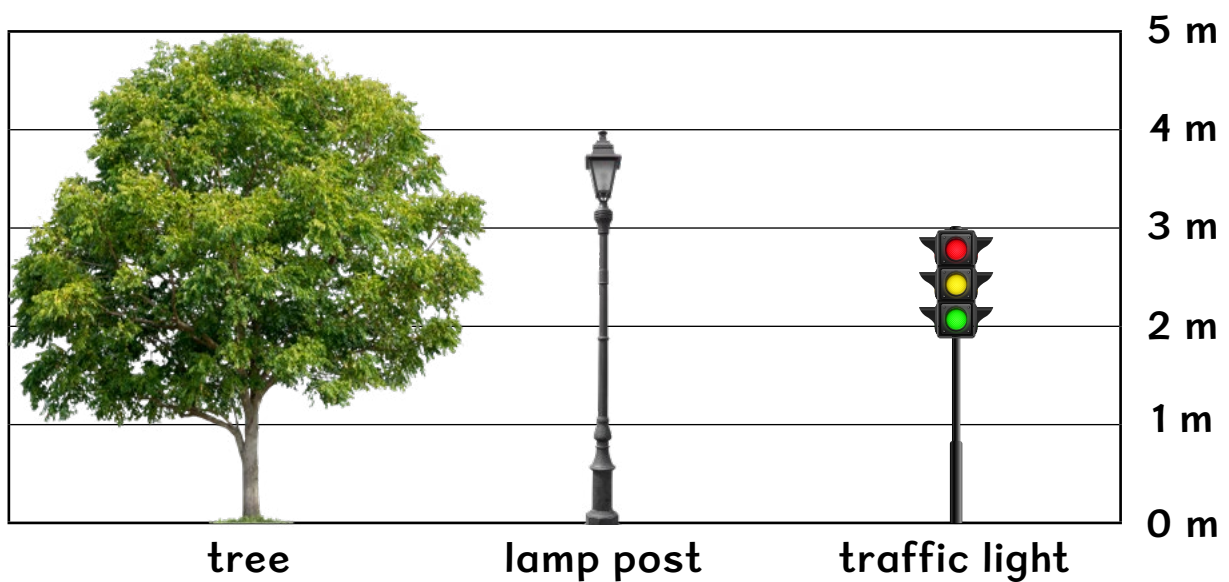
Who is able to measure the length of the sofa more easily?



What Have I Learnt?



- 1 The **metre (m)** is a unit of length.
- 2 We can measure length in **metres** and **centimetres**.
- 3 $1\text{ m} = 100\text{ cm}$
- 4 Comparing and ordering lengths.



The tree is the **tallest**.
The traffic light is the **shortest**.

Arrange them from the tallest to the shortest.

tree, lamp post, traffic light
tallest

The lamp post is 1 m **taller than** the traffic light.

The traffic light is 1 m **shorter than** the lamp post.

$$4 - 3 = 1$$



Multiplication Table of 2

Let's Learn

- 1 How many cupcakes are there?
Let us build a multiplication table of 2.

**Multiply
2 by**



$$2 \times 1 = 2$$



$$2 \times 2 = 4$$



$$2 \times 3 = 6$$



$$2 \times 4 = 8$$



$$2 \times 5 = 10$$



$$2 \times 6 = 12$$



$$2 \times 7 = 14$$

+ 2
+ 2
+ 2

Count by twos:
2, 4, 6, ...



Multiply 2 by

8



$$2 \times 8 = 16$$

9



$$2 \times 9 = 18$$

10



$$2 \times 10 = 20$$

Multiply numbers by 2

$$1 \times 2 = 2$$

$$2 \times 2 = \square$$

$$3 \times 2 = 6$$

$$4 \times 2 = 8$$

$$5 \times 2 = \square$$

$$6 \times 2 = 12$$

$$7 \times 2 = 14$$

$$8 \times 2 = \square$$

$$9 \times 2 = 18$$

$$10 \times 2 = 20$$

$$2 \times 1 = 2$$

$$2 \times 2 = 4$$

$$2 \times 3 = \square$$

$$2 \times 4 = 8$$

$$2 \times 5 = 10$$

$$2 \times 6 = 12$$

$$2 \times 7 = 14$$

$$2 \times 8 = 16$$

$$2 \times 9 = \square$$

$$2 \times 10 = 20$$

3×2 is
2 less than
 4×2 .

7×2 is
2 more than
 6×2 .



$10 \times 2 = 2 \times 10$
 10×2 is the
same as 2×10 .

$1 \times 2 = 2 \times 1$
 1×2 is the
same as 2×1 .



2 To **double** is to multiply by 2.



4 shoes

Double 2:

$$2 \times 2 = 4$$

$$2 + 2 = 4$$



6 dumplings

Double 3:

$$3 \times 2 = 6$$

$$3 + 3 = 6$$



8 wheels

Double 4:

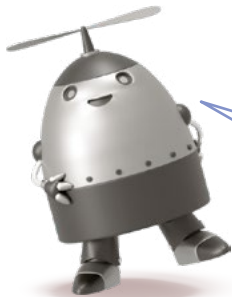
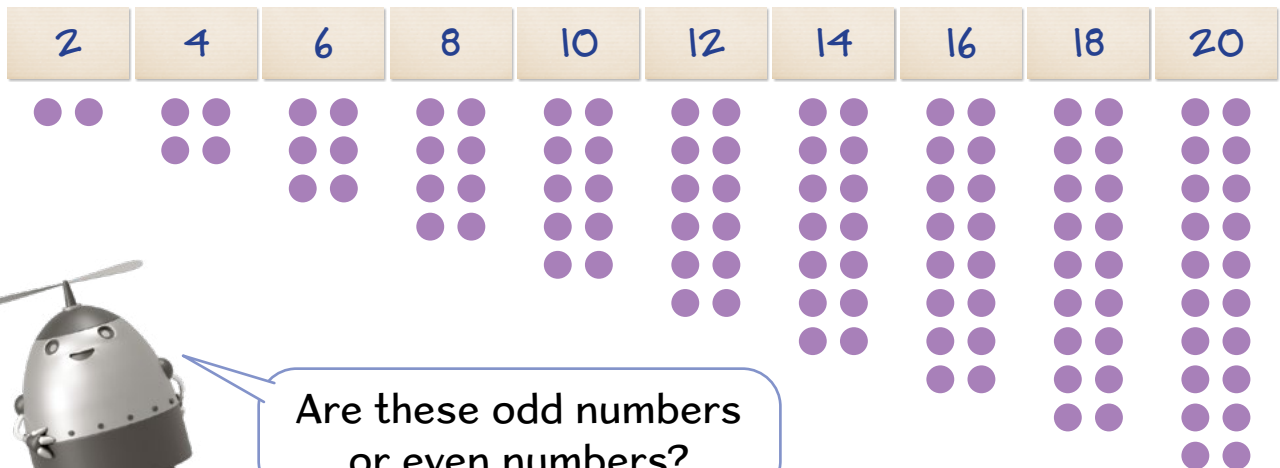
$$4 \times 2 = 8$$

$$4 + 4 = 8$$

Maths Talk



(a) Take turns to say these numbers which are in steps of 2.



Are these odd numbers
or even numbers?

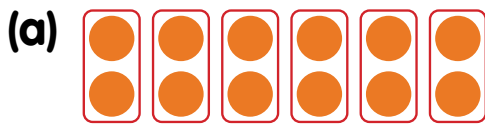
(b) What number pattern do you notice when you multiply 2 by

- an odd number?
- an even number?

Let's Practise

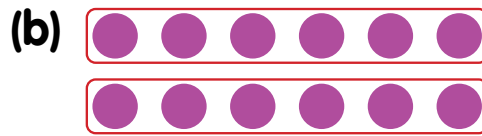


1 How many dots are there?



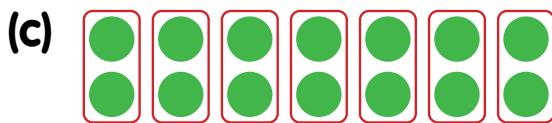
$$\square \circ \square = \square$$

There are dots.



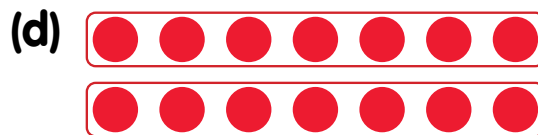
$$\square \circ \square = \square$$

There are dots.



$$\square \circ \square = \square$$

There are dots.



$$\square \circ \square = \square$$

There are dots.

2 Do you know your multiplication facts of 2 mentally?

(a) $\times 2 = 4$

(b) $\times 2 = 8$

(c) $5 \times$ $= 10$

(d) $\times 2 = 20$

(e) 6×2 is 2 than 5×2 .

(f) 8×2 is 2 than 9×2 .



Multiplying and Dividing by 2

Let's Learn

1 Multiplication and division are related.

(a) $2 \times 6 = 12$



$12 \div 6 = 2$

(b) $9 \times 2 = 18$



$18 \div 2 = 9$

2 Mrs Ramli bought 9 boxes of muffins.
Each box had 2 muffins.
How many muffins did she buy altogether?



$9 \times 2 = 18$

She bought **18** muffins altogether.

3 Janice has 14 presents.
She puts 2 presents in each box.
How many boxes does she use?



$14 \div 2 = 7$

She uses **7** boxes.

Check:
 $7 \times 2 = 14$



Let's Practise



- 1 There are 5 plates.
There are 2 cupcakes on each plate.
How many cupcakes are there in all?



$$\square \circ \square = \square$$

There are cupcakes in all.

- 2 There are 18 cupcakes.
Yasmin puts 2 cupcakes onto each plate.
How many plates does she need?

$$\square \circ \square = \square$$

She needs plates.

- 3 Sarah shares 16 pencils equally between 2 friends.
How many pencils does each friend get?

$$\square \circ \square = \square$$

Each friend gets pencils.



Which body parts come in twos, fives or tens?



Thinking Aloud

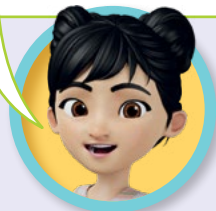
At a car park, only cars and motorcycles can be parked. Anna counted a total of 8 wheels for all the vehicles parked there.



Cheryl says there are only cars.
Daniel says there are only motorcycles.
Hazel says there can be both types of vehicles.

Are all three of them correct?

There are 2 cars.
Each car has 4 wheels.
 $2 \times 4 = 8$



There are motorcycles.
Each motorcycle has 2 wheels.
 $\times 2 = 8$



There are motorcycles
and cars.
 \times =
 \times =
 + =



What Have I Learnt?



1

Multiplication Table of 2

$1 \times 2 = 2$
$2 \times 2 = 4$
$3 \times 2 = 6$
$4 \times 2 = 8$
$5 \times 2 = 10$
$6 \times 2 = 12$
$7 \times 2 = 14$
$8 \times 2 = 16$
$9 \times 2 = 18$
$10 \times 2 = 20$

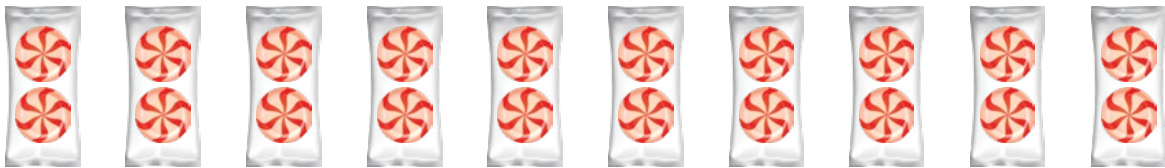
Multiplication Table of 5

$1 \times 5 = 5$
$2 \times 5 = 10$
$3 \times 5 = 15$
$4 \times 5 = 20$
$5 \times 5 = 25$
$6 \times 5 = 30$
$7 \times 5 = 35$
$8 \times 5 = 40$
$9 \times 5 = 45$
$10 \times 5 = 50$

Multiplication Table of 10

$1 \times 10 = 10$
$2 \times 10 = 20$
$3 \times 10 = 30$
$4 \times 10 = 40$
$5 \times 10 = 50$
$6 \times 10 = 60$
$7 \times 10 = 70$
$8 \times 10 = 80$
$9 \times 10 = 90$
$10 \times 10 = 100$

2 There are 10 packets of sweets.



$$10 \times 2 = 20$$

There are 20 sweets altogether.

$$20 \div 10 = 2$$

There are 2 sweets in each packet.

Multiplication and division are related.

