

This test covers material taught in Dimensions Math 2B.

**1** Add using mental math.

(a)  $36 + 40 = \boxed{\phantom{00}}$

(b)  $85 + 6 = \boxed{\phantom{00}}$

(c)  $50 + 375 = \boxed{\phantom{000}}$

(d)  $97 + 205 = \boxed{\phantom{000}}$

(e)  $32 + 199 = \boxed{\phantom{000}}$

(f)  $298 + 76 = \boxed{\phantom{000}}$

**2** Find the missing number.

(a)  $65 + \boxed{\phantom{00}} = 100$

(b)  $29 + \boxed{\phantom{00}} = 100$

(c)  $\boxed{\phantom{00}} + 12 = 100$

(d)  $\boxed{\phantom{00}} + 55 = 100$

**3** Subtract using mental math.

(a)  $68 - 40 =$

(b)  $943 - 80 =$

(c)  $800 - 70 =$

(d)  $51 - 9 =$

(e)  $200 - 97 =$

(f)  $408 - 99 =$

**4** Find the value.

(a)  $3 \times 7 =$

(b)  $9 \times 4 =$

(c)  $7 \times$    $= 21$

(d)  $4 \times 8 =$

(e)   $\times 3 = 27$

(f)  $6 \times$    $= 24$

**5** Divide.

(a)  $20 \div 4 =$

(b)  $18 \div 3 =$

(c)  $24 \div 3 =$

(d)  $28 \div 4 =$

(e)  $16 \div$    $= 4$

(f)  $12 \div$    $= 6$

**6** A bag of rice weighs 5 kg.  
How much do 8 bags of rice weigh?

8 bags of rice weigh \_\_\_\_\_ kg.

- 7** Dion put 24 flowers equally into 4 vases.  
How many flowers are in each vase?

There are \_\_\_\_\_ flowers in each vase.

- 8** A farmer has 27 lemons.  
She puts them into bags of three.  
How many bags of lemons are there?

There are \_\_\_\_\_ bags of lemons.

- 9** Kona wants to put 38 candles into boxes.  
Each box can hold 5 candles.  
How many boxes does she need?

She needs \_\_\_\_\_ boxes.

**10** Add or subtract.

(a)  $95¢ + \boxed{\phantom{00}}¢ = 100¢$

(b)  $22¢ + \boxed{\phantom{00}}¢ = \$1$

(c)  $\$1 - 57¢ = \boxed{\phantom{00}}¢$

(d)  $\$1 - 34¢ = \boxed{\phantom{00}}¢$

**11** Write the amount of money.

Fifty-four cents	\$____.____
Seven dollars and ten cents	\$____.____
Eight cents	\$____.____
Sixty-three dollars	\$____.____

**12** Fill in the blanks.

(a) \_\_\_\_\_ dimes make \$3.00.

(b) \_\_\_\_\_ quarters make \$3.75.

(c) \_\_\_\_\_ pennies make \$1.00.

(d) \_\_\_\_\_ nickels make 80¢.

**13** Add or subtract.

(a)  $\$2.55 + 25¢ = \$$

(b)  $\$0.95 + \$1.95 = \$$

(c)  $\$6.75 + \$1.40 = \$$

(d)  $55¢ - 20¢ =$   ¢

(e)  $\$7.89 - \$5.80 = \$$

(f)  $\$3.10 - \$0.90 = \$$

- 14** Emma has 3 quarters, 3 dimes, and 3 nickels.  
Alex has a dollar bill and two dimes.  
Sofia has 5 dimes, 2 pennies, and 8 quarters.  
Dion has a dollar bill, one nickel, and one penny.

(a) Who has the most money?

\_\_\_\_\_ has the most money.

(b) Who have the same amount of money?

\_\_\_\_\_ and \_\_\_\_\_ have the same amount of money.

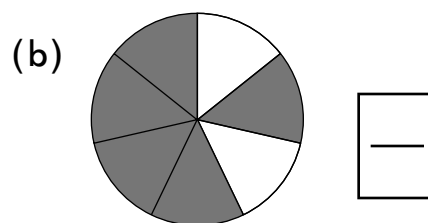
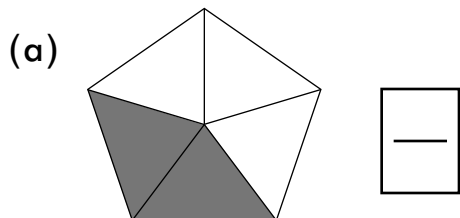
(c) Does Dion or Alex have less money?  
How much less?

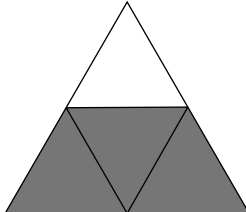
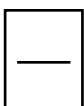
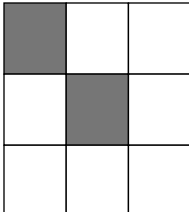
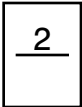
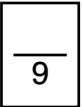
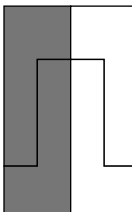
\_\_\_\_\_ has less money.

He has \_\_\_\_\_ less.

- 15** Alex has \$6.00.  
He buys a burrito for \$3.15 and a drink for 80¢.  
How much money does he have left?

- 16** What fraction of each shape is shaded?



- 17** (a)   $\frac{3}{4}$  and  make 1 whole.
- (b)   and  make 1 whole.
- (c)  \_\_\_\_\_ fourths make 1 half.



18 (a) There are \_\_\_\_\_ one-fifths in  $\frac{3}{5}$ .

(b) There are \_\_\_\_\_ one-tenths in  $\frac{7}{10}$ .

(c) There are \_\_\_\_\_ one-thirds in one whole.

(d) Write the fraction for five-twelfths.

—
---

19 Write the fractions in order, beginning with the smallest fraction:

$\frac{1}{3}$
---------------

$\frac{1}{9}$
---------------

$\frac{1}{4}$
---------------

$\frac{1}{8}$
---------------

$\frac{1}{2}$
---------------

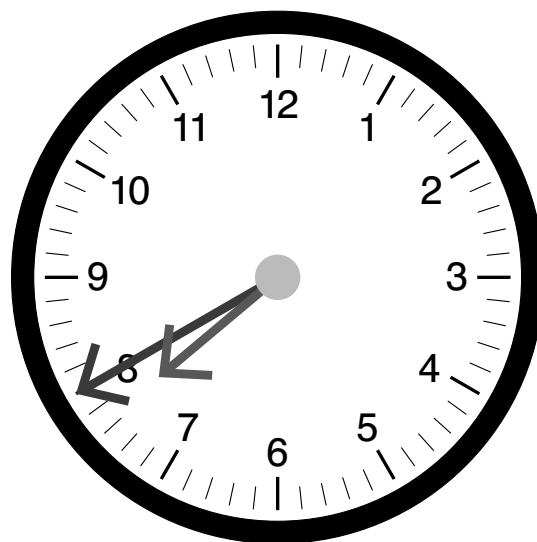
20 Dion ate  $\frac{1}{7}$  of a cake. Mei ate  $\frac{1}{6}$  of the same cake.  
Who ate more cake?

\_\_\_\_\_ ate more cake.

**21** Fill in the blanks.

(a) What time is the clock showing?

\_\_\_\_:\_\_\_\_



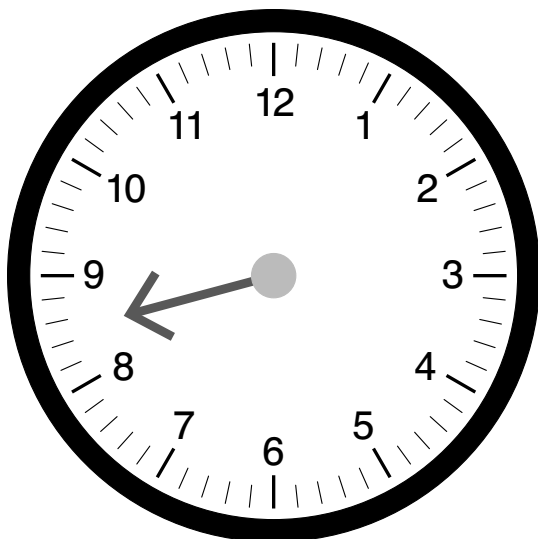
(b) Write the time in words:

\_\_\_\_\_

(c) It is \_\_\_\_\_ minutes to 8.

(d) What time was it 6 hours ago? \_\_\_\_\_:\_\_\_\_\_

(e) Draw the minute hand to show what time it will be in 50 minutes.



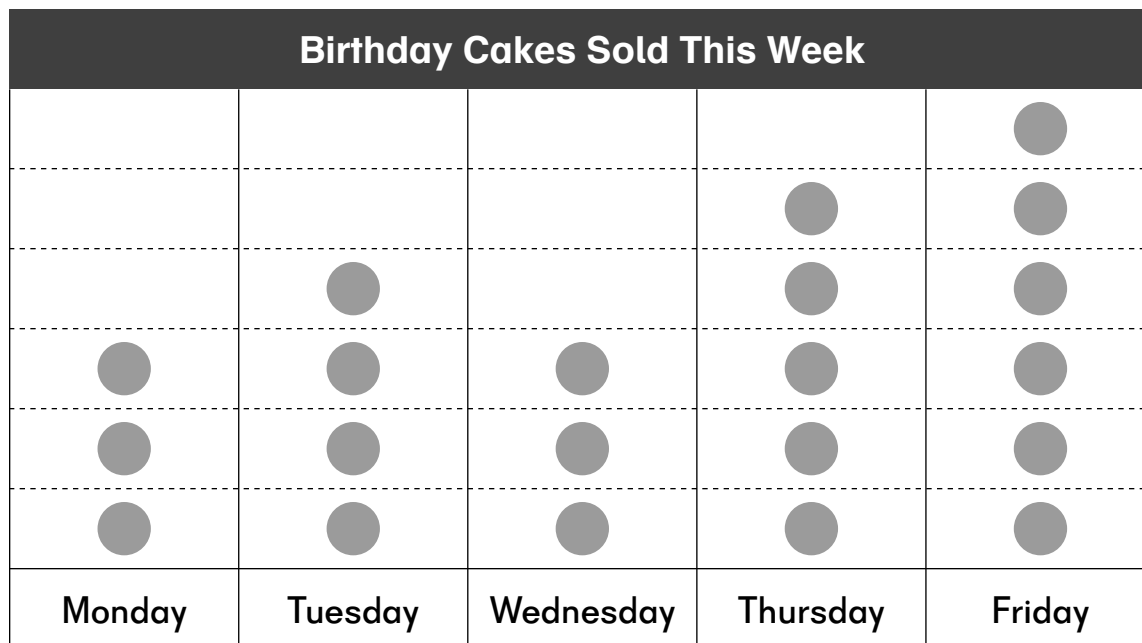
- 22** A show started at 9:15 a.m. and lasted 45 min.  
What time did the show end?

- 23** A plane left Seattle and arrived in Portland at 12:40 p.m.  
The flight took 55 minutes.  
What time did the plane leave Seattle?

- 24** Circle True or False.

- |   |      |       |
|---|------|-------|
| (a) 1 liter of water can fill about 40 water glasses. | True | False |
| (b) A water jug can hold about 2 L of water.          | True | False |
| (c) The capacity of a bath tub is about 20 L.         | True | False |
| (d) A fish tank has a greater capacity than a teacup. | True | False |

- 25 This picture graph shows the number of birthday cakes sold by a bakery this week.



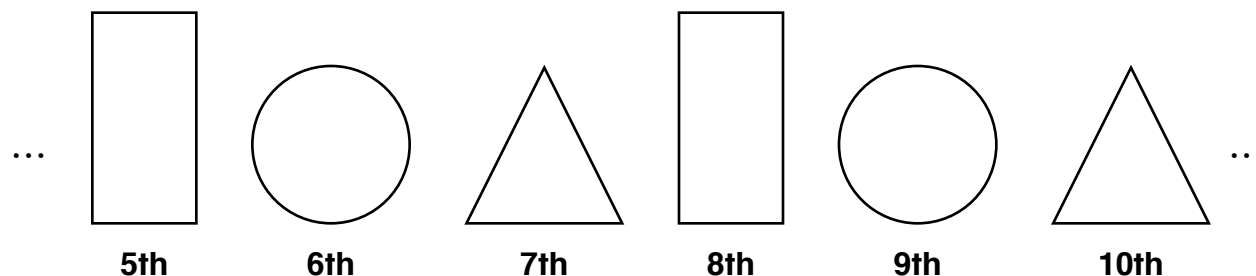
Each ● stands for 5 cakes.

- (a) How many cakes were sold on Tuesday?
- (b) On which 2 days were the same number of cakes sold?
- (c) On which day were the most cakes sold?
- (d) How many more cakes did the bakery sell on Friday than on Monday?
- (e) How many cakes were sold in the five days?

**26** Circle True or False.

- |  |      |       |
|--|------|-------|
| (a) Triangles are polygons with 3 sides.             | True | False |
| (b) Rectangles are polygons with 4 sides.            | True | False |
| (c) Hexagons have 5 sides.                           | True | False |
| (d) Rectangles are quadrilaterals.                   | True | False |
| (e) There are 4 semicircles in a circle.             | True | False |
| (f) A fourth of a circle is called a quarter-circle. | True | False |

**27** Draw the 1st shape in this pattern.



**28** Fill in the blanks.

(a) A cube has \_\_\_\_\_ faces that are squares.

(b) A cube has \_\_\_\_\_ corners.

(c) A cuboid has \_\_\_\_\_ edges.

(d) A cylinder has \_\_\_\_\_ curved surfaces.

(e) A cone has \_\_\_\_\_ face that is a circle.

(f) A sphere has \_\_\_\_\_ corners.

## Answer Key

---

- 1** (a) 76 (b) 91  
(c) 425 (d) 302  
(e) 231 (f) 374
- 2** (a) 35 (b) 71  
(c) 88 (d) 45
- 3** (a) 28 (b) 863  
(c) 730 (d) 42  
(e) 103 (f) 309
- 4** (a) 21 (b) 36  
(c) 3 (d) 32  
(e) 9 (f) 4
- 5** (a) 5 (b) 6  
(c) 8 (d) 7  
(e) 4 (f) 2
- 6** 8 bags of rice weigh 40 kg.
- 7** There are 6 flowers in each vase.
- 8** There are 9 bags of lemons.
- 9** She needs 8 boxes.
- 10** (a) 5¢ (b) 78¢  
(c) 43¢ (d) 66¢
- 11** \$0.54, \$7.10, \$0.08, \$63.00
- 12** (a) 30 dimes make \$3.00.  
(b) 15 quarters make \$3.75.  
(c) 100 pennies make \$1.00.  
(d) 16 nickels make 80¢.
- 13** (a) \$2.80 (b) \$2.90  
(c) \$8.15 (d) 35¢  
(e) \$2.09 (f) \$2.20
- 14** (a) Sofia has the most money.  
(b) Emma and Alex have the same amount of money.  
(c) Dion has less money.  
He has 14¢ (or \$0.14) less.

## Answer Key

---

**15** \$2.05

**16** (a)  $\frac{2}{5}$  (b)  $\frac{5}{7}$

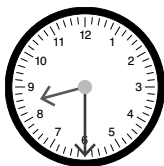
**17** (a)  $\frac{1}{4}$  (b)  $\frac{2}{9}, \frac{7}{9}$   
(c) 2

**18** (a) 3 (b) 7  
(c) 3 (d)  $\frac{5}{12}$

**19**  $\frac{1}{9}, \frac{1}{8}, \frac{1}{4}, \frac{1}{3}, \frac{1}{2}$

**20** Mei ate more cake.

**21** (a) 7:40 (b) seven forty  
(c) 20 (d) 1:40  
(e)



**22** 10:00 a.m.

**23** 11:45 a.m.

**24** (a) False (b) True  
(c) False (d) True

**25** (a) 20  
(b) Monday and Wednesday  
(c) Friday (d) 15  
(e) 105

**26** (a) True (b) True  
(c) False (d) True  
(e) False (f) True



**28** (a) A cube has 6 faces that are squares.  
(b) A cube has 8 corners.  
(c) A cuboid has 12 edges.  
(d) A cylinder has 1 curved surface.  
(e) A cone has 1 face that is a circle.  
(f) A sphere has 0 corners.