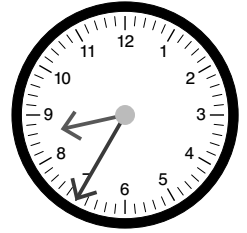


1 (a) What time is 3 hours after 8:40 a.m.?



(b) What time is 2 h 40 min after 8:40 a.m.?

(c) What time is 3 h 40 min after 8:40 a.m.?

(d) What time is 4 h 40 min after 8:40 a.m.?

(e) What time is 10 h 40 min after 8:40 a.m.?

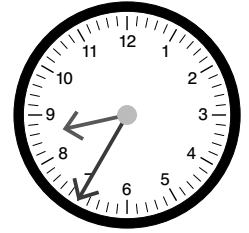
Answers:

1 (a) 11:40 a.m. (b) 11:20 a.m. (c) 12:20 p.m.

(d) 1:20 p.m. (e) 7:20 p.m.

2 How much time passes from

(a) 8:40 a.m. to 10:15 a.m.



(b) 8:40 a.m. to 2:15 noon

(c) 8:40 a.m. to 9:15 p.m.

3 (a) What time is 3 h 50 min before 8:40 a.m.?

(b) What time is 11 h 50 min before 8:40 a.m.?

Answers:

2 (a) 1 h 35 min (b) 5 h 35 min (c) 12 h 35 min

3 (a) 4:50 a.m. (b) 8:50 p.m.

- 4 A track meet began at 10:30 a.m. and ended at 3:15 p.m. How long was the track meet?
- 5 Devon left home at 7:35 a.m. He got back home 9 hours and 45 minutes later. What time did he get back home?
- 6 Sunrise was at 7:05 a.m. It set 10 hours and 10 minutes earlier. What time was sunset the night before?
- 7 Bree's flight leaves at 3:20 p.m. She wants to get to the airport at least 1 h and 45 minutes before her flight leaves. She figures it will take about 2 h 30 min to drive to the airport, park the car, and get to the terminal. By what time should she leave home?

Answers:

- 4 4 h 45 min 5 5:20 p.m. 6 8:55 p.m. 7 11:05 a.m.